

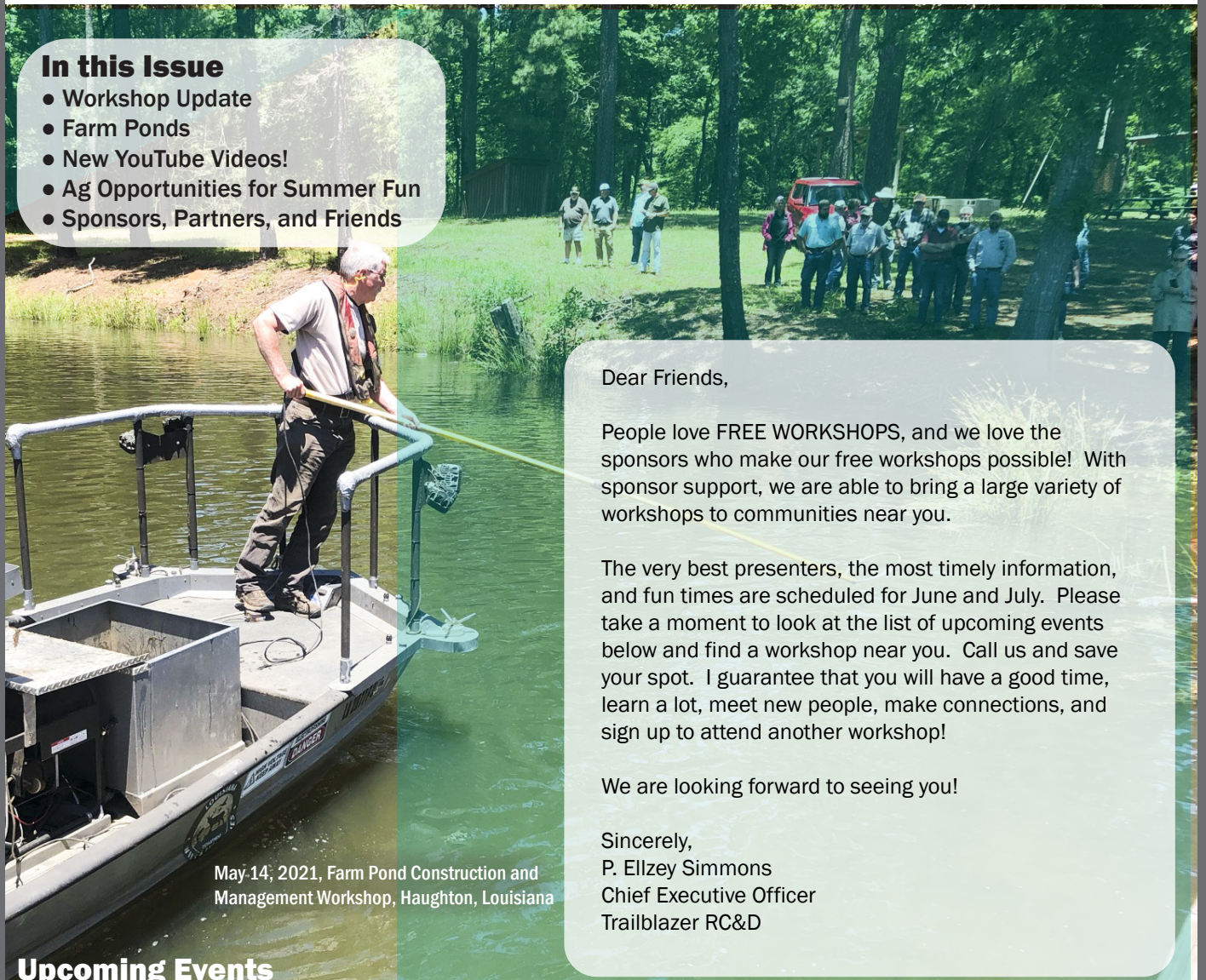
# Trailblazer news

good for the land . . . good for the people

Volume 11 • Issue 6 • June 2021

## In this Issue

- Workshop Update
- Farm Ponds
- New YouTube Videos!
- Ag Opportunities for Summer Fun
- Sponsors, Partners, and Friends



May 14, 2021, Farm Pond Construction and Management Workshop, Houghton, Louisiana

Dear Friends,

People love FREE WORKSHOPS, and we love the sponsors who make our free workshops possible! With sponsor support, we are able to bring a large variety of workshops to communities near you.

The very best presenters, the most timely information, and fun times are scheduled for June and July. Please take a moment to look at the list of upcoming events below and find a workshop near you. Call us and save your spot. I guarantee that you will have a good time, learn a lot, meet new people, make connections, and sign up to attend another workshop!

We are looking forward to seeing you!

Sincerely,  
P. Ellzey Simmons  
Chief Executive Officer  
Trailblazer RC&D

## Upcoming Events

**June 1:** Finding Rare Animals in Louisiana, Lincoln Parish Library, Ruston, LA, 6:00 p.m. - 7:30 p.m.

**June 8:** Minerals Leasing Workshop, Sibley Town Hall, Sibley, LA, 6:00 p.m. - 7:30 p.m.

**June 11:** Forestry Best Management Practices - Family Forest Landowners, Red Oak Lake, Houghton, LA, 8:30 a.m. - 2:00 p.m.

**June 24:** Pollinators with Quail Forever, Homer Library, Homer, LA, 6:00 p.m. - 7:30 p.m.

**June 24:** Livestock Field Day, Roy McIntyre Farm, Delhi, LA, 5:00 p.m. - 7:30 p.m.

**July 1:** Pollinators with Quail Forever, Charles Garrett Community Center, Jonesboro, LA, 6:00 p.m. - 7:30 p.m.

**July 6:** Pollinators with Quail Forever, Lincoln Parish Library, Ruston, LA, 6:00 p.m. - 7:30 p.m.

**July 13:** Pollinators with Quail Forever, Ringgold Library, Ringgold, LA, 6:00 p.m. - 7:30 p.m.

**July 20:** Pollinators with Quail Forever, Minden LDWF Meeting Hall, Minden, LA, 6:00 p.m. - 7:30 p.m.

**July 27:** Pollinators with Quail Forever, Union Parish Police Jury, Farmerville, LA, 6:00 p.m. - 7:30 p.m.

**To register to attend these workshops or for more information, call or text (318) 237-8350 and provide your name and the name of the workshop.**

# Community

## SUPPORTING SUSTAINABLE COMMUNITIES

**May 14**

### Farm Pond Construction and Management

Red Oak Lake, Haughton, Louisiana

A Trailblazer Farm Pond Construction and Management Workshop was held on May 14, 2021, at Red Oak Lake near Haughton. Fifty-four people attended the workshop. Participants said the presentations were excellent and very easy to understand. Favorite workshop activities were the fish shocking, learning about fish stocking and pond construction, and individual help offered. Overall, everyone enjoyed the workshop, gave high marks to the presenters, and said the meal was excellent!

This workshop was provided free to the public through the partnership and support of ENABLE Midstream Partners; Mudd & Holland Consulting Foresters, LLC; Louisiana Department of Wildlife and Fisheries (LDWF); Louisiana Forestry Association; Bossier Parish Police Jury; USDA Natural Resources Conservation Service; and Trailblazer RC&D.

★ Special thanks go to Tim Holland and family for their extra effort and time spent to make this workshop a great success! We appreciate your support!

**Watch our website for dates! Another farm pond workshop is planned for the fall!**



“Great information and on-site demonstration.”  
Workshop Participant

May 14, 2021, Farm Pond Construction and Management Workshop, Haughton, Louisiana



May 14, 2021, Farm Pond Construction and Management Workshop, Haughton, Louisiana

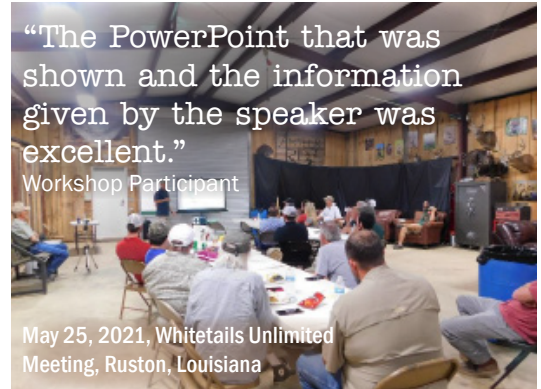
**May 25**

### Whitetails Unlimited Meeting

Ruston, Louisiana

Trailblazer RC&D participated in a Whitetails Unlimited meeting in Ruston, Louisiana, on May 25, 2021, by offering a presentation on developing wildlife habitat for whitetail deer. Biologist Terry Johnston provided information on using native plants to improve deer habitat, as well as how to introduce desirable plant species to wildlife habitat areas.

★ We appreciate the invitation to participate in this meeting! Special thanks go to Daniel Taylor, the Whitetails Unlimited group, and Glenn Scriber for including Trailblazer RC&D!



“The PowerPoint that was shown and the information given by the speaker was excellent.”  
Workshop Participant

May 25, 2021, Whitetails Unlimited Meeting, Ruston, Louisiana

**May 27**

### All About Bats

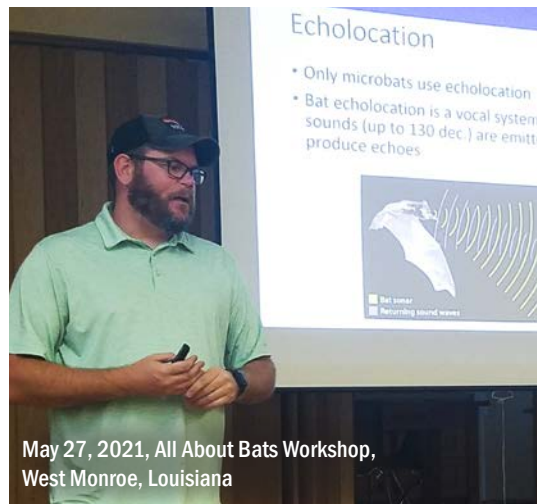
LSU AgCenter, West Monroe, Louisiana

An “All About Bats” workshop was hosted on May 27, 2021, at the LSU AgCenter in West Monroe, Louisiana. Presenters shared information on how important bats are to pollination, agriculture, insect control, and more.

This workshop was made possible by the support of ENABLE Midstream Partners; Mudd & Holland Consulting Foresters, LLC; Burnham Construction, Inc.; Canfor Southern Pine; Louisiana Forestry Association; LSU AgCenter; USDA Natural Resources Conservation Service; and Trailblazer RC&D.

★ Many thanks go to Max Cox for a GREAT PRESENTATION! Special thanks go to Jamie Shivers and staff of USDA NRCS for making this workshop a great success!

**Check out upcoming events at: [www.trailblazer.org](http://www.trailblazer.org)**



May 27, 2021, All About Bats Workshop, West Monroe, Louisiana

# Conservation CONVERSATION

## Are you considering constructing a farm pond?



Farm ponds are built for many reasons. Agricultural producers use ponds for livestock, waterfowl and wildlife habitat, irrigation, fire protection, fish production, and recreation. Depending on your planned use, farm ponds can be designed to meet your specific needs.

### Before you get started

There are several things you need to think about:

#### Legal considerations

Pond related permitting is required.

#### Pond use

Pond use will determine the pond design.

#### Pond site

Soil type and slope are key to success.

#### Water supply

A regular water supply is necessary to keep the pond full.

#### Spillway

Removing excess water out of the pond is just as important as keeping the pond full.

After the pond is constructed, maintenance is essential to ensure a healthy functioning farm pond. Farm pond maintenance includes monitoring water quality, oxygen levels, fertilization, stocking and managing fish populations, weed control, and much more. Many of these issues are addressed in a publication produced by the LSU AgCenter; Sea Grant-Louisiana, Louisiana Department of Wildlife and Fisheries; and

### Sport Fish Restoration—Management of Recreational and Farm Ponds in Louisiana.

This publication can be found at: <https://freshwater-aquaculture.extension.org/wp-content/uploads/2019/08/ManagementRecFarmPondsLouisiana.pdf>.

If you are interested in constructing a pond on your farm or you have issues with the farm pond you currently have, contact your local office of the USDA Natural Resources Conservation Service (NRCS). NRCS is available to provide technical and financial assistance to help with pond site selection, design, construction, and maintenance.

If you are interested in seeing first-hand how to manage your farm pond, attend a Trailblazer RC&D Pond Construction and Maintenance Workshop. These workshops are scheduled throughout the year. Check our online event schedule at: [www.trailblazer.org/events/](http://www.trailblazer.org/events/)



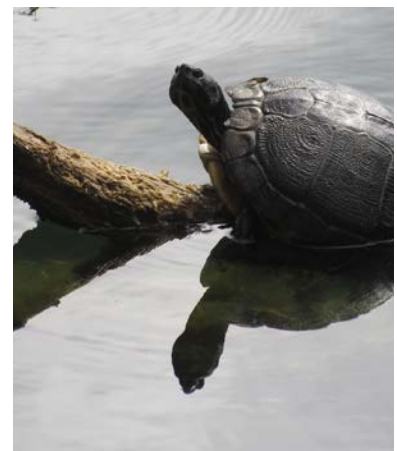
May 14, 2021, Farm Pond Construction and Management Workshop, Haughton, Louisiana

Caroline Simmons caught this 1.5 pound bass in Red Oak Lake farm pond. This pond has been featured many times during Trailblazer field days. Way to go Caroline!

## The ecosystem of a farm pond is very diverse.

A farm pond provides a habitat for many plant and animal species. The aquatic plants help maintain water quality, temperature, and oxygen levels; reduce bank erosion; and provide food, spawning grounds, and escape cover for wildlife. Logs can provide basking and sunning opportunities for amphibians and turtles; egg-laying sites for fish, frogs, and salamanders; shelter for fish; and perches for birds. Deeper pond areas provide habitat for fish. Islands in the pond can provide nesting and resting areas for waterfowl. Vegetated buffer areas provide nesting and cover for wildlife.

From: Farm Pond Ecosystems, Fish and Wildlife Habitat Management Leaflet Number 29, May 2005, USDA Natural Resources Conservation Service and the Wildlife Habitat Council, [https://www.nrcs.usda.gov/Internet/FSE\\_DOCUMENTS/nrcs143\\_009937.pdf](https://www.nrcs.usda.gov/Internet/FSE_DOCUMENTS/nrcs143_009937.pdf), viewed 5/26/21.



# NEW VIDEO Resources

[www.youtube.com/channel/UCGghA8uiafntp92cYXWI5nw](http://www.youtube.com/channel/UCGghA8uiafntp92cYXWI5nw)  
[www.trailblazer.org/video-gallery](http://www.trailblazer.org/video-gallery)



**Trailblazer's YouTube channel offers something for everyone!**

Scan this QR code with your Smartphone to visit Trailblazer's YouTube channel!



## Working With Your Forestry Consultant With Tim Holland

Series of 3 Videos:  
Making Good Decisions  
Why Do Timber Prices Vary?  
Tips for Timber Sales

### A forestry consultant

represents forest landowners in all forestry matters from seedling to harvest, sale negotiation, contract preparation, and enforcement.

To view, go to: <https://youtu.be/thgZIXPmTSU>



In this video series, Tim Holland, owner and lead forester at Mudd & Holland Consulting Foresters LLC, shares a sample of the advice and assistance that a forestry consultant can provide forest landowners.

To view, go to: <https://youtu.be/elrVXr3OIHE>  
and . . . <https://youtu.be/8wUv8sePeFU>

**The USDA Natural Resources Conservation Service (NRCS)** provides America's farmers and ranchers financial and technical assistance to voluntarily put conservation on the ground.

### NRCS COVID Precautions

Due to current COVID-19 conditions, NRCS staff are working with customers through phone, mail and online communications. Field work continues with appropriate social distancing to help producers with conservation planning and financial assistance through Farm Bill programs.

#### NRCS Local Contacts:

- |  |  |
|--|--|
| <b>Bienville Parish:</b><br>(318) 377-3950, ext. 3           | <b>Jackson/Lincoln Parishes:</b><br>(318) 255-3136, ext. 3 |
| <b>Bossier Parish:</b><br>(318) 872-4949                     | <b>Union Parish:</b><br>(318) 368-8021                     |
| <b>Claiborne/Webster Parishes:</b><br>(318) 377-3950, ext. 3 | <b>Winn Parish:</b><br>(318) 357-8366, ext. 3              |

### NRCS Online Services Available with eAuth Account

All USDA Service Centers, including those with NRCS field offices, are not currently accessible to customers in person. Online services are available to customers with an eAuth account, which provides access to the farmers.gov offsite link where producers can view USDA farm loan information and payments and view and track certain USDA program applications and

payments. Customers who do not already have an eAuth account can enroll at [farmers.gov/sign-in](http://farmers.gov/sign-in). Online NRCS services are available to customers through the Conservation Client Gateway link which can be found at [www.nrcs.usda.gov](http://www.nrcs.usda.gov). Customers can track payments, report completed practices, request conservation assistance and electronically sign documents.

**Not sure who to contact? Get in touch with Trailblazer RC&D at [ceo@trailblazer.org](mailto:ceo@trailblazer.org), and we will put you in touch with the right people to address your resource concern.**

A LITTLE SOMETHING EXTRA!

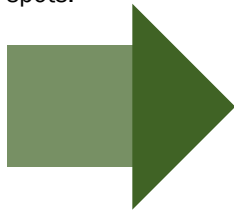
# Lagniappe

**AGRITOURISM**  
**EDUCATIONAL AND FUN!**

## Looking for Something NEW to do This Summer?

You don't have to look far. There are great opportunities for you and your family right here in north Louisiana! Farmers and ag producers are opening up their farms and businesses to give you a unique opportunity to visit rural Louisiana, learn, and have fun!

So, when the kids say they are bored . . . load them up in the car and visit a farm. Adventure awaits right around the corner. Check out these local spots:



**Cypress Nature Study Center – Benton, Louisiana**

Features fishing, swimming, 4.5 miles of trails, a picnic area, petting zoo and a comprehensive nature center.

**Keachi Acres – Keachi, Louisiana**

Features 200 acres of woodlands and hay meadows, fishing, hiking, gardening, swimming, and canoeing.

**Landry Vineyards – West Monroe, Louisiana**

Features tasting room and beautiful hillside vineyards.

**Louisiana Herbs – Columbia, Louisiana**

Features pick-your-own mint, basil, and other culinary herbs; and buy plants on historic Breston Plantation.

**McCain's Family Farm, LLC – Ringgold, Louisiana**

Features five-acre, pick-your-own blueberry farm.

**Mitcham Farms Peach Store – Ruston, Louisiana**

Features peaches and peach products at the largest peach orchard in Louisiana.

**McKinney Hill Farm – Hosston, Louisiana**

Features pick-your-own blueberries, blackberries, purple hull peas, and tomatoes.

**For locations, hours, and contact information for these locations and more, visit <https://www.louisianatravel.com/attractions/agritourism>**

**AGRITOURISM is a business venture on a working farm, ranch or agricultural enterprise that offers educational and fun experiences for visitors while generating supplemental income for the owner.**



Blueberry picking with grandchildren makes delicious memories!

HMartien



HMartien

**Q.**  
**What is the best thing to put in a blueberry pie?**

**A.**  
**Your teeth!**



## WORKSHOPS

Trailblazer RC&D offers workshops throughout the summer on a variety of subjects. Check out our workshop schedule on our webpage at: [www.trailblazer.org/events/](http://www.trailblazer.org/events/) and register your family to attend!

In accordance with Federal civil rights law and U.S. Department of Agriculture (USDA) civil rights regulations and policies, the USDA, its Agencies, offices, and employees, and institutions participating in or administering USDA programs are prohibited from discriminating based on race, color, national origin, religion, sex, gender identity (including gender expression), sexual orientation, disability, age, marital status, family/parental status, income derived from a public assistance program, political beliefs, or reprisal or retaliation for prior civil rights activity, in any program or activity conducted or funded by USDA (not all bases apply to all programs). Remedies and complaint filing deadlines vary by program or incident. Persons with disabilities who require alternative means of communication for program information (e.g., Braille, large print, audiotape, American Sign Language, etc.) should contact the responsible Agency or USDA's TARGET Center at (202) 720-2600 (voice and TTY) or contact USDA through the Federal Relay Service at (800) 877-8339. Additionally, program information may be made available in languages other than English. To file a program discrimination complaint, complete the USDA Program Discrimination Complaint Form, AD-3027, found online at How to File a Program Discrimination Complaint and at any USDA office or write a letter addressed to USDA and provide in the letter all of the information requested in the form. To request a copy of the complaint form, call (866) 632-9992. Submit your completed form or letter to USDA by: (1) mail: U.S. Department of Agriculture, Office of the Assistant Secretary for Civil Rights, 1400 Independence Avenue, SW, Washington, D.C. 20250-9410; (2) fax: (202) 690-7442; or (3) email: [program.intake@usda.gov](mailto:program.intake@usda.gov). USDA is an equal opportunity provider, employer, and lender.

# MANY THANKS TO OUR Sponsors PARTNERS AND FRIENDS



**MUDD & HOLLAND**  
CONSULTING FORESTERS, LLC  
Tim Holland (318) 286-2802



**PROGRESSIVE BANK**

*Friends of Trailblazer*  
Louisiana Department of Wildlife and Fisheries  
LSU AgCenter  
Claiborne Parish Library  
USDA APHIS  
Minden Farm and Garden



BIENVILLE PARISH POLICE JURY



BOSSIER PARISH POLICE JURY



CLAIBORNE PARISH POLICE JURY



LINCOLN PARISH POLICE JURY



UNION PARISH POLICE JURY



WEBSTER PARISH POLICE JURY



302 REYNOLDS DRIVE  
RUSTON, LOUISIANA 71270  
(318) 255-3554  
ceo@trailblazer.org

“Peace I leave with you;  
my peace I give you. I do  
not give to you as the  
world gives. Do not let  
your hearts be troubled  
and do not be afraid.”

John 14:27  
New International Version  
(NIV)



**Know what's below.  
Call before you dig.**

**This Dial 811 message is brought to you by Enable Midstream Partners.**  
Enable Midstream Partners is a publicly traded master limited partnership that owns, operates, and develops strategically located natural gas and crude oil infrastructure assets serving major producing basins and markets.