

# Trailblazer news

Volume 13 • Issue 9 • September 2023

good for the land . . . good for the people



## Gators, Bears, and Hogs — Oh My!

and we are not talking football

During August, Trailblazer hosted two workshops featuring biologist and author David Moreland discussing what to do when vermin wreak havoc on your landscape. Attendees in Homer and Bossier City learned state hunting and trapping laws regarding nuisance animals and information on federally protected species.

Many thanks go to David Moreland for providing a great workshop full of interesting, helpful information!

### DID YOU KNOW

**The Louisiana Department of Wildlife and Fisheries licenses Nuisance Alligator Hunters across the state to capture nuisance alligators. These hunters capture and remove more than 1,000 nuisance alligators every year.**

Source:

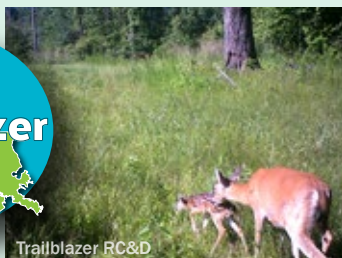
<https://www.wlf.louisiana.gov/page/nuisance-alligators>

Dear Friends,

This month, we are featuring workshops on fall wildlife food plots and planting native trees in your landscape. Both topics are very timely, as it is time to start planning and planting your wildlife food plot — and the heat and drought we are experiencing has us all wondering if our trees and plants will survive.

I hope you will join us along the way during September. I promise you will learn something new, and you will “pass a good time.”

P. Ellzey Simmons  
Chief Executive Officer  
Trailblazer RC&D



## UPCOMING WORKSHOPS

- **Fall Wildlife Food Plots for Whitetail Deer with Terry Johnston**  
September 5 - 6:00 p.m. - 7:30 p.m.  
Lincoln Parish Library  
910 North Trenton  
Ruston, Louisiana
- **The Natives Are Restless: A look at several native trees good for Louisiana landscapes. with Ricky Kilpatrick**  
September 12 - 6:00 p.m. - 7:30 p.m.  
Bossier Parish Libraries History Center  
2206 Beckett Street  
Bossier City, Louisiana
- **Who Gets My Land When I Die? And What Can I Do About It? with Paul Spillers**  
October 3 - 6:00 p.m. - 7:30 p.m.  
Lincoln Parish Library  
910 North Trenton  
Ruston, Louisiana

**Register today by calling or texting  
(318) 237-8350.**

# Conservation Conversation

## WILDLIFE FOOD PLOTS

**Wildlife food plots enhance habitat for wildlife by providing supplemental nutrition when the quality and quantity of naturally available food sources decline.**

Increased nutrition can benefit wildlife in many ways including weight, reproduction, hatchability, lactation rate, and antler development.

When defining objectives for your food plot, consider your target wildlife; i.e., whitetail deer, wild turkeys, or other species. This will help you determine what you need to plant, when you need to plant, how much to plant, and where to plant. Site selection, soil testing, fertility, site preparation, and plants are just a few of the variables you should consider when planning a wildlife food plot. Other considerations are animal movements, habitat composition, and equipment access.

There are many resources available to help you plan and develop a wildlife food plot on your land.

**Landowners' Guide to Wildlife Food Plots**, Craig A. Harper, University of Tennessee Extension, viewed online 8/30/2023 <https://extension.tennessee.edu/publications/Documents/PB1874.pdf>

**Supplemental Wildlife Food Planting Manual for the Southeast**, Mississippi State University Extension, viewed online 8/30/2023 [http://extension.msstate.edu/sites/default/files/publications/publications/P21111\\_web.pdf](http://extension.msstate.edu/sites/default/files/publications/publications/P21111_web.pdf)

**Food Plot Plantings for White-tailed Deer in Louisiana**, LSU AgCenter, viewed online 8/30/2023 <https://www.lsuagcenter.com/~media/system/c/0/a/c/c0ac87afc02009c5d5c110af45afd760/pub2843deerplantingshighres1.pdf>

In addition, Trailblazer RC&D offers a series of videos spotlighting fall food plots. These videos feature information on soil testing, fertilizer, web soil survey, food plot size, location considerations, cereal grains, clovers, and brassicas/winter peas. See page 3 of this newsletter for links to these videos.



Sept 5  
Workshop  
6 p.m. - 7:30 p.m.

**If you would like to hear first-hand how to develop a successful wildlife food plot for whitetail deer, attend Trailblazer's upcoming workshop on September 5 at the Lincoln Parish Library**

### FALL WILDLIFE FOOD PLOTS FOR WHITETAIL DEER WORKSHOP

**Register today by calling or texting (318) 237-8350.**



### Winter Forages for Deer

- |                         |                    |
|-------------------------|--------------------|
| <b>Crimson Clover</b>   | <b>Winter Peas</b> |
| <b>Arrowleaf Clover</b> | <b>Brassicas</b>   |
| <b>Red Clover</b>       | <b>Wheat</b>       |
| <b>White Clover</b>     | <b>Oats</b>        |
| <b>Chickory</b>         |                    |

**Another way to improve wildlife habitat/food sources for deer is through timber management. Examples of trees that are native to Louisiana and are attractive to deer are oaks, persimmons, and mayhaws. For more information on trees to attract deer, watch Trailblazer's video on Improving Deer Herd Nutrition with David Moreland at <https://youtu.be/zEFQIVOEWN4?si=5tFSpfjzvnaLU1kP>**

# Video Resources

## TRAILBLAZER VIDEO SPOTLIGHT

Check out our videos at: [www.youtube.com/@trailblazerrcd9097](http://www.youtube.com/@trailblazerrcd9097)

A series of fall wildlife food plot workshops were hosted by Trailblazer RC&D during the summer of 2022. Trailblazer captured these workshops on video, and you are able to “attend” these workshops via our YouTube channel.

Trailblazer’s food plot videos feature information on soil testing, fertilizer, web soil survey, food plot size, location considerations, cereal grains, clovers, and brassicas/winter peas.

### Fall Wildlife Food Plots #1

Conservationist and biologist Terry Johnston shares information on soil testing to ensure a successful food plot.

<https://youtu.be/SWo5yGiv6Io>



### Fall Wildlife Food Plots #8

Conservationist and biologist Terry Johnston shares information plants you should consider for your wildlife food plot with a focus on brassicas and winter peas.

<https://youtu.be/mPbS2Q5AhqE>



### Food Plot Fertilizer

<https://youtu.be/mH8JlhGJb0>

### Food Plot Cereal Grains

<https://youtu.be/nDCQIYhyu-U>

### Food Plot Clovers

<https://youtu.be/ITq8lCbxmt8>

### Food Plot Location Considerations

<https://youtu.be/GePTMLTCbG4>

Check out Trailblazer’s YouTube channel for a variety of educational videos on topics ranging from the water cycle to backyard conservation and birds, bats, and bees!

Scan me to go to Trailblazer’s YouTube



[www.youtube.com/@trailblazerrcd9097](http://www.youtube.com/@trailblazerrcd9097)



Attend this year’s Trailblazer food plot workshop with Terry Johnston at the Lincoln Parish Library in Ruston on September 5. The workshop begins at 6 p.m. and concludes at 7:30 p.m.

Register today by calling or texting (318) 237-8350.



# News

## STATEWIDE BURN BAN

On August 14, 2023, Gov. John Bel Edwards declared a state of emergency due to the multiple impacts of extreme heat affecting the state. The Louisiana State Fire Marshal and the Louisiana Department of Agriculture (LDAF) also recently issued a statewide cease and desist order for all private burning.

### There have been over 440 wildfires in August alone.

“Everyone should take these dangerously high temperatures seriously. The extreme heat has already caused a high number of deaths and sent even more people to the hospital. In addition, our state is experiencing very dry weather, which coupled with the heat has produced a number of wildfires. So far the fires have destroyed more than 20,000 acres of land and property. That is exactly why the burn ban is in place. I want to thank State Fire Marshal Dan Wallis and State Agriculture Commissioner Mike Strain for the work they are doing to keep us safe, but we need everyone in communities statewide to pitch in and help. It is necessary for all of us to do our part to prevent any further problems from occurring. Please stay cool and hydrated. Also, follow the burn ban, and encourage your family, friends and neighbors to do the same.”

**From:**  
<https://gov.louisiana.gov/page/burnban>

## National Hunting and Fishing Day September 23, 2023 Events in Baton Rouge, Minden, Monroe, Woodworth

The Louisiana Department of Wildlife and Fisheries (LDWF) participates in National Hunting and Fishing Day each year on the fourth Saturday in September. This year, LDWF is hosting four National Hunting and Fishing Day events on Saturday, September 23, 2023:

**Baton Rouge:** Waddill Outdoor Education Center, 4142 North Flannery Road, Baton Rouge, contact (225) 765-2927

**Minden:** Bodcau Shooting Range, 168 Ben Durden Road, Haughton, contact (318) 371-3050

**Monroe:** Black Bayou Lake National Wildlife Refuge, 480 Richland Place Drive, Monroe, contact (318) 343-4044

**Woodworth:** Woodworth Shooting Range, 661 Robinson Bridge Road, Woodworth, contact (318) 484-2276

Louisiana’s National Hunting and Fishing Day events are free. Each location’s event varies but all include exhibits on LDWF’s research and conservation efforts, shooting and fishing demonstrations, and exhibits from local chapters of Ducks Unlimited, the Safari Club, and the Coastal Conservation Association, as well as local businesses. Attendees can try their skills at the shooting ranges, fishing ponds, and boating activities and learn about wildlife with live animal demonstrations.

**For more information, go to:**  
<https://www.wlf.louisiana.gov/page/nhfd>

## Dove Fields Cannot be Burned Due to State-Wide Burn Ban

The Louisiana Department of Wildlife and Fisheries (LDWF) would like to remind hunters that dove fields cannot be burned in preparation for opening weekend of dove season, which begins September 2, due to the state-wide burn ban in effect.

With the burn ban in effect, one of the most popular methods for preparing dove fields is not an option. The goal behind preparing a dove field for opening day, or any other day, of dove hunting is to have available food that is easily accessible to doves. Doves feed on small grains and need easy access to them. Therefore, your dove field must have bare ground or be cut such that the vegetation is short and not covered with stalk residue.

A good alternative to burning is to mow or bush hog a field. In order to create the clean ground desired by doves, the residue can be raked, shredded, or lightly disked; heavy disking will cover too much of the seed. Remember, although it is legal to manipulate planted grains for doves it is NOT legal to add grains to a field and hunt over them.

Updated information on the burn ban in Louisiana can be found at: <https://www.ldaf.state.la.us/programs/parish-burn-bans/>

**For more information, contact  
Jeff Duguay, Ph.D.,  
jduguay@wlf.la.gov  
225-765-2353.**

# Did You Know . . . ?



## Trees help with:

- **Energy Conservation**
- **Property Value**
- **Air Pollution Reduction**
- **Water Quality and Conservation**
- **Wildlife Habitat**
- **Environmental Improvement**

There are many kinds of trees available for your landscape, and there are many things to consider when selecting a tree:

- Planting Site
- Right Size for the Right Place
- Tree Spacing
- Care of Your Tree

## When selecting plants for your landscape, it is always wise to select native plants.

Native plants have been growing in a particular habitat or area for thousands of years. They have adapted to the climate, light, and soil conditions that are typical in that area. They require less water, fertilizer, and maintenance to thrive.

When selecting trees for your Louisiana landscape, consider trees that are native to the southeast United States—in particular, Louisiana. A few of these native trees are:

- **Baldcypress**
- **Eastern Red Cedar**
- **Flowering Dogwood**
- **Hickories**
- **Pecans and many others**

The LSU AgCenter published a “Native Tree Growing Guide for Louisiana” that is available online at:

<https://www.lsuagcenter.com/NR/rdonlyres/F5E6FA92-D84F-4716-9176-355A62765838/18167/pub2926NativeTreeGuide.pdf>

This growing guide provides a general guide for native tree selection, as well as site selection, planting tips, and growing guide.

## Tree Identification Tool

The Arbor Day Foundation offers an online illustrated step-by-step tree identification field guide at:

<https://www.arborday.org/trees/whattree/>

**If you would like to learn more about native trees in your landscape, attend Trailblazer’s upcoming workshop in Bossier City on September 12:**

**THE NATIVES ARE RESTLESS—A LOOK AT SEVERAL NATIVE TREES GOOD FOR LOUISIANA LANDSCAPES**

**Sept 12 Workshop**  
6 p.m. - 7:30 p.m.

Register today by calling or texting (318) 237-8350.

**Free registration for Trailblazer RC&D’s workshops and events is made possible by the support of our partners and sponsors.**

**Join us as a partner!**

To learn more,  
email [trailblazerceo@gmail.com](mailto:trailblazerceo@gmail.com) or  
call/text (318) 243-9194.

**Trailblazer RC&D is an equal opportunity employer and provider.**

# Partners & Friends

## Thank you to our partners!



Special thanks go to the Lincoln Parish Library, Bossier Parish Library, Webster Parish Library, Claiborne Parish Library, LSU AgCenter, Louisiana Department of Wildlife and Fisheries and many other community partners for their continued support of Trailblazer RC&D.

## SPONSOR SPOTLIGHT



Hunt Forest Products is a family-owned and -operated full-service wood products company. For over 45 years, they have produced a variety of quality plywood, lumber, and other specialty wood products. They own and manage over 75,000 acres of timberland in Louisiana using sustainable forestry practices, and they offer complete timber management services for private landowners.

**We appreciate Hunt Forest Products' outstanding support of Trailblazer activities and their recent generous donation.**



302 REYNOLDS DRIVE  
RUSTON, LOUISIANA 71270  
(318) 255-3554  
ceo@trailblazer.org

“For everything that was written in the past was written to teach us, so that through the endurance taught in the Scriptures and the encouragement they provide we might have hope.”

Romans 15:4  
New International Version

